

PANDEMIC RESPONSE: Outdoor Dining and Public Space Typologies



Off-Street Parking Lots / Open Space

Vilnius, Lithuania

Eating Plazas

The eating plaza intervention converts off-street parking or open space into physically distant seating for the public. While this is intended for city-owned lots, such as the West Side Market parking lot, private owners may be interested in similar solutions for their visitors, or as partners with the community stakeholders.

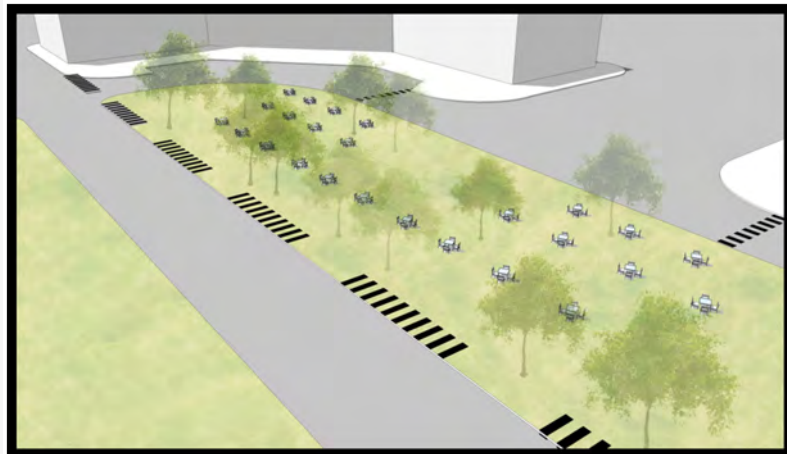


Copyright S.Ziura/Vilnius.lt

The ideal areas for this interventions are near significant clusters of dining and cafe activity with existing nearby surplus of parking options, and near other public spaces.

Oversight will be needed to ensure seating is arranged responsibly and signage requesting masks be worn.

Cleveland

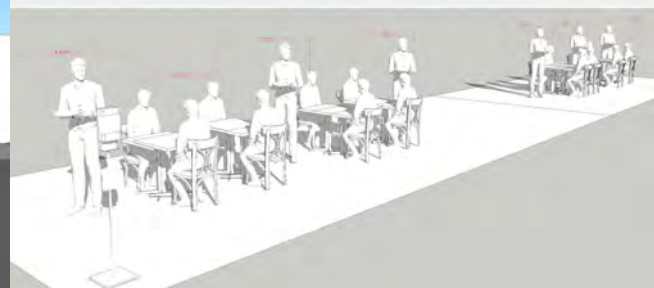


Conceptual model for Shaker Square eating plaza

City Planning Commission



City Planning Commission



Seating arranged for proper physical distancing

Conceptual model for W. 24th Pl / West Side Market eating plaza, conversion of two aisles of parking

PANDEMIC RESPONSE: Outdoor Dining and Public Space Typologies



On-Street Parking Space

Dallas

Modular "Parklets"

Parklets are on-street parking spaces that have been converted to seating, decoration, or any other use other than storing cars.

The term "modular" refers to the cell-like nature of the space. Each parking space (typically 10' x 18') can be converted as a separate individual patio, but multiple spaces can be joined together as well. This allows for flexible spaces that can adapt to community needs.

Businesses can prioritize their on-street parking space as they see most helpful to their operations and safety. One business on a block can occupy a parking space for curbside pick, while another prefers outdoor seating.



Jason Roberts for Revelers Hall

Cleveland

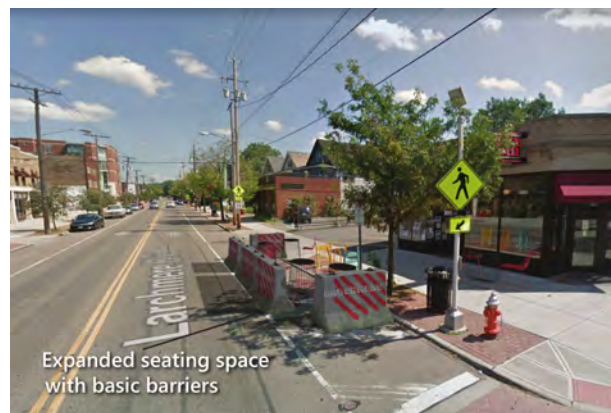


Euclid Ave planned parklet, 2015

CUDC / Vocon



BEFORE



AFTER

PANDEMIC RESPONSE: Outdoor Dining and Public Space Typologies

Secondary Streets

Street Closure - All Hours

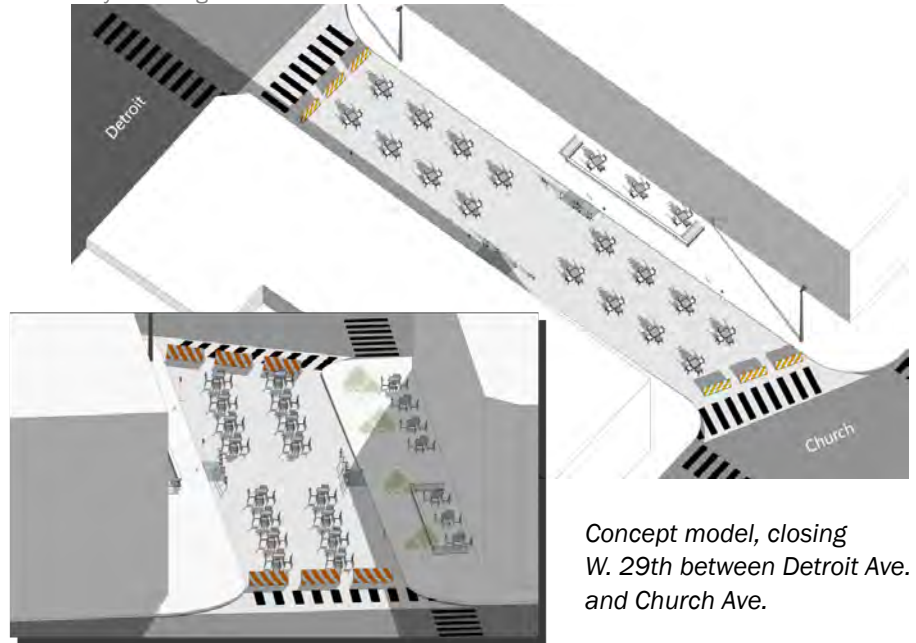
This street closure is intended for a right-of-way that can be closed all hours and has a substantial cluster of commercial activity. Secondary streets are those without bus routes, critical destinations (like hospitals) and closure would have little to no disruption transportation patterns. In other words, side streets and minor connections.

Both access points would be blocked by barriers, which can be decorated or posted with public safety signage. Businesses may organize to share furniture or cordon off private areas for physically distanced table service.

Markings can highlight six-foot distances. Care must be taken to ensure these areas do not become regional draws and are held to public safety standards.

City Planning Commission

Hingetown, Ohio City



Market Ave. near West Side Market



Denver, CO



Helen. H Richardson /Denver Post

Market Ave. closure
Sep. 2019



Google Streetview